

Informacje do zamówienia



ново.lign A licówki

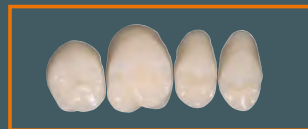
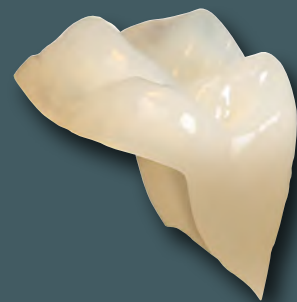
		Klasyfikacja kolorów w systemie A-D																		
		REF	BL3	A1	A2	A3	A3,5	A4	B1	B2	B3	B4	C1	C2	C3	C4	D2	D3	D4	
Górne przody			BL3	A10	A20	A30	A35	A40	B10	B20	B30	B40	C10	C20	C30	C40	D20	D30	D40	
C43	Set of 2 (13, 23)	VOC43	---	---	---	---	---	---	---	---	---	---	---	---	---	---	---	---	---	---
C43	Set of 4 (12, 11, 21, 22)	VOC43	---	---	---	---	---	---	---	---	---	---	---	---	---	---	---	---	---	---
C43	Set of 6 (13, 12, 11, 21, 22, 23)	VOC43	---	---	---	---	---	---	---	---	---	---	---	---	---	---	---	---	---	---
A44	Set of 2 (13, 23)	VOA44	---	---	---	---	---	---	---	---	---	---	---	---	---	---	---	---	---	---
A44	Set of 4 (12, 11, 21, 22)	VOA44	---	---	---	---	---	---	---	---	---	---	---	---	---	---	---	---	---	---
A44	Set of 6 (13, 12, 11, 21, 22, 23)	VOA44	---	---	---	---	---	---	---	---	---	---	---	---	---	---	---	---	---	---
I45	Set of 2 (13, 23)	VOI45	---	---	---	---	---	---	---	---	---	---	---	---	---	---	---	---	---	---
I45	Set of 4 (12, 11, 21, 22)	VOI45	---	---	---	---	---	---	---	---	---	---	---	---	---	---	---	---	---	---
I45	Set of 6 (13, 12, 11, 21, 22, 23)	VOI45	---	---	---	---	---	---	---	---	---	---	---	---	---	---	---	---	---	---
S46	Set of 2 (13, 23)	VOS46	---	---	---	---	---	---	---	---	---	---	---	---	---	---	---	---	---	---
S46	Set of 4 (12, 11, 21, 22)	VOS46	---	---	---	---	---	---	---	---	---	---	---	---	---	---	---	---	---	---
S46	Set of 6 (13, 12, 11, 21, 22, 23)	VOS46	---	---	---	---	---	---	---	---	---	---	---	---	---	---	---	---	---	---
I47	Set of 2 (13, 23)	VOI47	---	---	---	---	---	---	---	---	---	---	---	---	---	---	---	---	---	---
I47	Set of 4 (12, 11, 21, 22)	VOI47	---	---	---	---	---	---	---	---	---	---	---	---	---	---	---	---	---	---
I47	Set of 6 (13, 12, 11, 21, 22, 23)	VOI47	---	---	---	---	---	---	---	---	---	---	---	---	---	---	---	---	---	---
D48	Set of 2 (13, 23)	VOD48	---	---	---	---	---	---	---	---	---	---	---	---	---	---	---	---	---	---
D48	Set of 4 (12, 11, 21, 22)	VOD48	---	---	---	---	---	---	---	---	---	---	---	---	---	---	---	---	---	---
D48	Set of 6 (13, 12, 11, 21, 22, 23)	VOD48	---	---	---	---	---	---	---	---	---	---	---	---	---	---	---	---	---	---
M48	Set of 2 (13, 23)	VOM48	---	---	---	---	---	---	---	---	---	---	---	---	---	---	---	---	---	---
M48	Set of 4 (12, 11, 21, 22)	VOM48	---	---	---	---	---	---	---	---	---	---	---	---	---	---	---	---	---	---
M48	Set of 6 (13, 12, 11, 21, 22, 23)	VOM48	---	---	---	---	---	---	---	---	---	---	---	---	---	---	---	---	---	---
D49	Set of 2(13, 23)	VOD49	---	---	---	---	---	---	---	---	---	---	---	---	---	---	---	---	---	---
D49	Set of 4 (12, 11, 21, 22)	VOD49	---	---	---	---	---	---	---	---	---	---	---	---	---	---	---	---	---	---
D49	Set of 6 (13, 12, 11, 21, 22, 23)	VOD49	---	---	---	---	---	---	---	---	---	---	---	---	---	---	---	---	---	---
B51	Set of 2 (13, 23)	VOB51	---	---	---	---	---	---	---	---	---	---	---	---	---	---	---	---	---	---
B51	Set of 4 (12, 11, 21, 22)	VOB51	---	---	---	---	---	---	---	---	---	---	---	---	---	---	---	---	---	---
B51	Set of 6 (13, 12, 11, 21, 22, 23)	VOB51	---	---	---	---	---	---	---	---	---	---	---	---	---	---	---	---	---	---
K53	Set of 2 (13, 23)	VOK53	---	---	---	---	---	---	---	---	---	---	---	---	---	---	---	---	---	---
K53	Set of 4 (12, 11, 21, 22)	VOK53	---	---	---	---	---	---	---	---	---	---	---	---	---	---	---	---	---	---
K53	Set of 6 (13, 12, 11, 21, 22, 23)	VOK53	---	---	---	---	---	---	---	---	---	---	---	---	---	---	---	---	---	---

		Klasyfikacja kolorów w systemie A-D																		
		REF	BL3	A1	A2	A3	A3,5	A4	B1	B2	B3	B4	C1	C2	C3	C4	D2	D3	D4	
Dolne przody			BL3	A10	A20	A30	A35	A40	B10	B20	B30	B40	C10	C20	C30	C40	D20	D30	D40	
T35	Set of 2 (43, 33)	VUT35	---	---	---	---	---	---	---	---	---	---	---	---	---	---	---	---	---	---
T35	Set of 4 (42, 41, 31, 32)	VUT35	---	---	---	---	---	---	---	---	---	---	---	---	---	---	---	---	---	---
T35	Set of 6 (43, 42, 41, 31, 32, 33)	VUT35	---	---	---	---	---	---	---	---	---	---	---	---	---	---	---	---	---	---
D38	Set of 2 (43, 33)	VUD38	---	---	---	---	---	---	---	---	---	---	---	---	---	---	---	---	---	---
D38	Set of 4 (42, 41, 31, 32)	VUD38	---	---	---	---	---	---	---	---	---	---	---	---	---	---	---	---	---	---
D38	Set of 6 (43, 42, 41, 31, 32, 33)	VUD38	---	---	---	---	---	---	---	---	---	---	---	---	---	---	---	---	---	---
D41	Set of 2 (43, 33)	VUD41	---	---	---	---	---	---	---	---	---	---	---	---	---	---	---	---	---	---
D41	Set of 4 (42, 41, 31, 32)	VUD41	---	---	---	---	---	---	---	---	---	---	---	---	---	---	---	---	---	---
D41	Set of 6 (43, 42, 41, 31, 32, 33)	VUD41	---	---	---	---	---	---	---	---	---	---	---	---	---	---	---	---	---	---



novo.lig licówki wielofunkcyjne, G-design

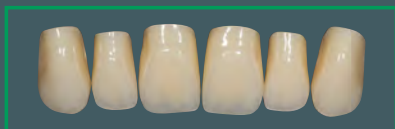
			Klasyfikacja kolorów w systemie A-D																	
			BL3	A1	A2	A3	A3,5	A4	B1	B2	B3	B4	C1	C2	C3	C4	D2	D3	D4	
boki G 3			REF	BL3	A10	A20	A30	A35	A40	B10	B20	B30	B40	C10	C20	C30	C40	D20	D30	D40
1G3	1. quadrant, (14, 15, 16, 17)	V01G3	---																	
2G3	2. quadrant, (24, 25, 26, 27)	V02G3	---																	
3G3	3. quadrant, (34, 35, 36, 37)	VU3G3	---																	
4G3	4. quadrant, (44, 45, 46, 47)	VU4G3	---																	
boki G 4																				
1G4	1. quadrant, (14, 15, 16, 17)	V01G4	---																	
2G4	2. quadrant, (24, 25, 26, 27)	V02G4	---																	
3G4	3. quadrant, (34, 35, 36, 37)	VU3G4	---																	
4G4	4. quadrant, (44, 45, 46, 47)	VU4G4	---																	



novo.lign P licówki na korony i mosty, W-design

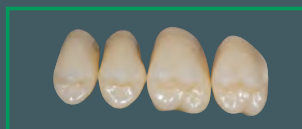
			Klasyfikacja kolorów w systemie A-D																	
			BL3	A1	A2	A3	A3,5	A4	B1	B2	B3	B4	C1	C2	C3	C4	D2	D3	D4	
boki W 3			REF	BL3	A10	A20	A30	A35	A40	B10	B20	B30	B40	C10	C20	C30	C40	D20	D30	D40
1W3	1. quadrant, (14, 15, 16, 17)	V01W3	---																	
2W3	2. quadrant, (24, 25, 26, 27)	V02W3	---																	
3W3	3. quadrant, (34, 35, 36, 37)	VU3W3	---																	
4W3	4. quadrant, (44, 45, 46, 47)	VU4W3	---																	
boki W 4																				
1W4	1. quadrant, (14, 15, 16, 17)	V01W4	---																	
2W4	2. quadrant, (24, 25, 26, 27)	V02W4	---																	
3W4	3. quadrant, (34, 35, 36, 37)	VU3W4	---																	
4W4	4. quadrant, (44, 45, 46, 47)	VU4W4	---																	
boki W 5																				
1W5	1. quadrant, (14, 15, 16, 17)	V01W5	---																	
2W5	2. quadrant, (24, 25, 26, 27)	V02W5	---																	
3W5	3. quadrant, (34, 35, 36, 37)	VU3W5	---																	
4W5	4. quadrant, (44, 45, 46, 47)	VU4W5	---																	

Informacje do zamówienia



neo.lign A zęby przednie

			Klasyfikacja kolorów w systemie A-D																
			BL3	A1	A2	A3	A3,5	A4	B1	B2	B3	B4	C1	C2	C3	C4	D2	D3	D4
Przednie górne	REF	S	BL3	A10	A20	A30	A35	A40	B10	B20	B30	B40	C10	C20	C30	C40	D20	D30	D40
C43 Set of 6 (13, 12, 11, 21, 22, 23)	TOC43	---																	
A44 Set of 6 (13, 12, 11, 21, 22, 23)	TOA44	---																	
I45 Set of 6 (13, 12, 11, 21, 22, 23)	TOI45	---																	
S46 Set of 6 (13, 12, 11, 21, 22, 23)	TOS46	---																	
I47 Set of 6 (13, 12, 11, 21, 22, 23)	TOI47	---																	
D48 Set of 6 (13, 12, 11, 21, 22, 23)	TOD48	---																	
M48 Set of 6 (13, 12, 11, 21, 22, 23)	TOM48	---																	
D49 Set of 6 (13, 12, 11, 21, 22, 23)	TOD49	---																	
B51 Set of 6 (13, 12, 11, 21, 22, 23)	TOB51	---																	
Przednie dolne																			
T35 Set of 6 (43, 42, 41, 31, 32, 33)	TUT35	---																	
D38 Set of 6 (43, 42, 41, 31, 32, 33)	TUD38	---																	
D41 Set of 6 (43, 42, 41, 31, 32, 33)	TUD41	---																	



neo.lign P zęby boczne G-design

			Klasyfikacja kolorów wg. systemu A-D																
			BL3	A1	A2	A3	A3,5	A4	B1	B2	B3	B4	C1	C2	C3	C4	D2	D3	D4
Posterior teeth, G 2	REF	S	BL3	A10	A20	A30	A35	A40	B10	B20	B30	B40	C10	C20	C30	C40	D20	D30	D40
1G2 1. quadrant, (14, 15, 16, 17)	T01G2	---																	
2G2 2. quadrant, (24, 25, 26, 27)	T02G2	---																	
3G2 3. quadrant, (34, 35, 36, 37)	TU3G2	---																	
4G2 4. quadrant, (44, 45, 46, 47)	TU4G2	---																	
Posterior teeth, G 3																			
1G3 1. quadrant, (14, 15, 16, 17)	T01G3	---																	
2G3 2. quadrant, (24, 25, 26, 27)	T02G3	---																	
3G3 3. quadrant, (34, 35, 36, 37)	TU3G3	---																	
4G3 4. quadrant, (44, 45, 46, 47)	TU4G3	---																	
Posterior teeth, G 4																			
1G4 1. quadrant, (14, 15, 16, 17)	T01G4	---																	
2G4 2. quadrant, (24, 25, 26, 27)	T02G4	---																	
3G4 3. quadrant, (34, 35, 36, 37)	TU3G4	---																	
4G4 4. quadrant, (44, 45, 46, 47)	TU4G4	---																	



neo.lign P zęby boczne L-design

		Klasyfikacja kolorów wg. systemu A-D																
		BL3	A1	A2	A3	A3,5	A4	B1	B2	B3	B4	C1	C2	C3	C4	D2	D3	D4
Zęby boczne L 2	REF	BL3	A10	A20	A30	A35	A40	B10	B20	B30	B40	C10	C20	C30	C40	D20	D30	D40
TOWL2 (upper / sup. / max.)	TOWL2																	
TUWL2 (lower / inf. / mand.)	TUWL2																	
Zęby boczne L 3																		
TOWL3 (upper / sup. / max.)	TOWL3																	
TUWL3 (lower / inf. / mand.)	TUWL3																	
Zęby boczne L 4																		
TOWL4 (upper / sup. / max.)	TOWL4																	
TUWL4 (lower / inf. / mand.)	TUWL4																	



wosk beauty setup

	Cont.	REF
beauty setup jasny	25 g	430 0030 0
beauty setup ciemny	25 g	430 0031 0



visio.sil silikon

	Cont.	REF
visio.sil transparent 60SH	50 ml	540 0120 0
Mixing cannulas (size 4) visio.sil	12 Pcs.	320 0045 7
visio.sil fix	50 ml	540 0130 0
Mixing cannulas (size 1) visio.sil fix	12 Pcs.	320 0045 1
visio.sil ILT transparent 75SH	50 ml	540 0140 0
Mixing cannulas (size 2) visio.sil fix	12 Pcs.	320 0045 7



MKZ Primer

4 ml
REF MKZ02004



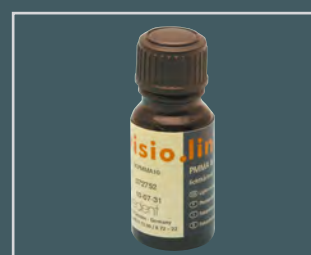
MKZ EM-Aktivator

4 ml
REF MKZEM004



K-Primer

3 ml
REF APK25003



visio.link

10 ml
REF VLPMA10

Informacje do zamówienia



crea.lign Modelling Liquid

10 ml
REF CLFMOD10



combo.lign Opaquer

	Cont.	REF
light A1-A3/B1-B2/C1/C2	4 g	CO1X40PL
medium A3,5/B3/B4/D2/D3	4 g	CO1X40PM
intensiv A4/C3/C4/D4	4 g	CO1X40PI
GUM	4 g	CO1X40PG
catalyst, wszystkie kolory	4 g	CO1X4Kat
Zestaw startowy, wszystkie kolory, 2xKat	6 x 4 g	OLIGNSET1



combo.lign kompozyt wiążący

		BL3	A1	A2	A3	A3,5	A4	B1	B2	B3	B4	C1	C2	C3	C4	D2	D3	D4
	REF	BL3	A10	A20	A30	A35	A40	B10	B20	B30	B40	C10	C20	C30	C40	D20	D30	D40
Kompozyt wiążący, 8 g	C02X4																	



crea.lign opaker i Zirconliner

	Cont.	REF
crea.lign opaker 1 A1/B2	4 g	CLFHOP01
crea.lign opaker 2 A2	4 g	CLFHOP02
crea.lign opaker 3 A3/D3	4 g	CLFHOP03
crea.lign opaker 4 B1/C1/BL3	4 g	CLFHOP04
crea.lign opaker 5 C2-C3/D2-D4	4 g	CLFHOP05
crea.lign opaker 6 B3-B4	4 g	CLFHOP06
crea.lign opaker 7 A3,5	4 g	CLFHOP07
crea.lign opaker 8 A4/C4	4 g	CLFHOP08
crea.lign opaker GUM	4 g	CLFHOGUM
crea.lign opaker Set	9 x 4 g	CLFHOPSET
crea.lign Opaker Z, Zirconliner	4 g	CLFHOP0Z



crea.lign brzegi sieczne

	Cont.	REF
crea.lign Incisal E4	5 g	CLFN00E4
crea.lign Incisal opal	5 g	CLFN00I1
crea.lign Incisal blue	5 g	CLFN00I2
crea.lign Incisal rose	5 g	CLFN00I3
crea.lign Incisal universal	5 g	CLFN00I4
crea.lign GUM light	5 g	CLFN00G1
crea.lign GUM rosa	5 g	CLFN00G2



crea.lign dentyna i modyfikatory

	Cont.	REF
crea.lign Dentin BL3	5 g	CLFNDBL3
crea.lign Dentin A1	5 g	CLFNDA10
crea.lign Dentin A2	5 g	CLFNDA20
crea.lign Dentin A3	5 g	CLFNDA30
crea.lign Dentin A3,5	5 g	CLFNDA35
crea.lign Dentin A4	5 g	CLFNDA40
crea.lign Dentin B1	5 g	CLFNDB10
crea.lign Dentin B2	5 g	CLFNDB20
crea.lign Dentin B3	5 g	CLFNDB30
crea.lign Dentin B4	5 g	CLFNDB40
crea.lign Dentin C1	5 g	CLFNDC10
crea.lign Dentin C2	5 g	CLFNDC20
crea.lign Dentin C3	5 g	CLFNDC30
crea.lign Dentin C4	5 g	CLFNDC40
crea.lign Dentin D2	5 g	CLFNDD20
crea.lign Dentin D3	5 g	CLFNDD30
crea.lign Dentin D4	5 g	CLFNDD40
crea.lign Modifier beige	5 g	CLFN00M1
crea.lign Modifier oliv	5 g	CLFN00M2
crea.lign Modifier caramel	5 g	CLFN00M3



crea.lign dziąsła i modyfikator

	Cont.	REF
crea.lign GUM light	5 g	CLFN00G1
crea.lign GUM rosa	5 g	CLFN00G2
crea.lign GUM pink	5 g	CLFN00G3
crea.lign GUM red	5 g	CLFN00G4
crea.lign Modifier lila	5 g	CLFN00M4



crea.lign pasta

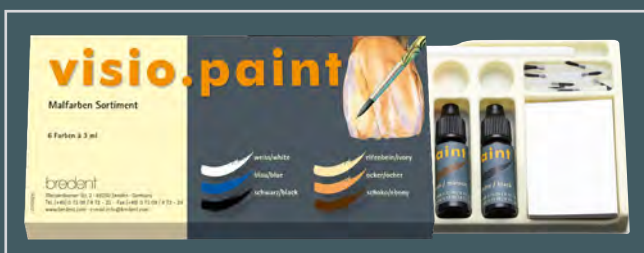
	Cont.	REF
crea.lign paste Start set A2/A3/A3,5/B2/B3/C3/D3 inclusive Rotary piston	7 x 3 g	CLPNSET7
Rotary piston crea.lign paste	1 St.	32000444
crea.lign paste Dentin BL3	3 g	CLPNDBL3
crea.lign paste Dentin A1	3 g	CLPNDA10
crea.lign paste Dentin A2	3 g	CLPNDA20
crea.lign paste Dentin A3	3 g	CLPNDA30
crea.lign paste Dentin A3,5	3 g	CLPNDA35
crea.lign paste Dentin A4	3 g	CLPNDA40
crea.lign paste Dentin B1	3 g	CLPNDB10
crea.lign paste Dentin B2	3 g	CLPNDB20
crea.lign paste Dentin B3	3 g	CLPNDB30
crea.lign paste Dentin B4	3 g	CLPNDB40
crea.lign paste Dentin C1	3 g	CLPNDC10
crea.lign paste Dentin C2	3 g	CLPNDC20
crea.lign paste Dentin C3	3 g	CLPNDC30
crea.lign paste Dentin C4	3 g	CLPNDC40
crea.lign paste Dentin D2	3 g	CLPNDD20
crea.lign paste Dentin D3	3 g	CLPNDD30
crea.lign paste Dentin D4	3 g	CLPNDD40

Informacje do zamówienia



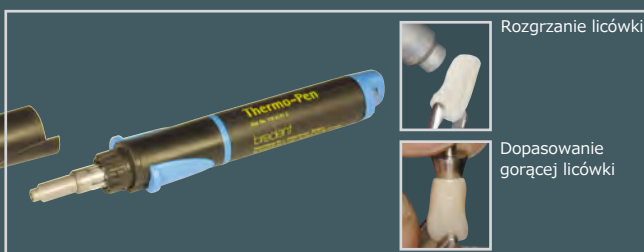
crea.lign farbki

	Cont.	REF
crea.lign Stain orange	1,4 g	CLFN00S1
crea.lign Stain brown	1,4 g	CLFN00S2



visio.paint

	Shade	REF
visio.paint	Assortment	540 0125 0
visio.paint	white	540 0125 1
visio.paint	blue	540 0125 2
visio.paint	black	540 0125 3
visio.paint	ivory	540 0125 4
visio.paint	ocher	540 0125 5
visio.paint	ebony	540 0125 6



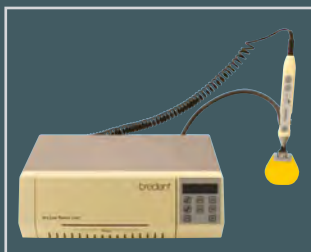
Rozgrzanie licówki

Dopasowanie gorącej licówki

Thermo-Pen

Jest to urządzenie wykorzystujące piezo technologię z gorącym powietrzem, bez otwartego płomienia. Licówka może być rozgrzana bez ryzyka jej spalenia. Wymagana temperatura do kształtowania licówki wynosi ok. 250° C. Gwarantuje lepszą powłokę np. pod korony teleskopowe, dzięki odpowiedniej ekspansji.

REF 110 0147 0



bre.LUX Power Unit

Lampa do polimeryzacji LED

polymerization unit incl. LED hand-held lamp
REF 140 0097 0



Zestaw do finiszowania kompozytu

Do wytwarzania wysokiej jakości licówek, odpornych na płytkę nazębną i odbarwienia.

REF VLTOOLKIT



Dyspenser combo.lign

Dyspenser do wszystkich kartridży combo.lign do łatwego oraz kontrolowanego aplikowania kompozytu wiążącego combo.lign 5 ml 1:1

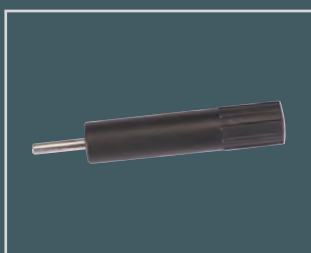
REF 320 0044 1



Dyspenser visio.sil

Dyspenser do kartridży visio.sil, visio.sil ILT, visio.sil fix do łatwej oraz kontrolowanej aplikacji silikonu

REF 320 0044 0



Tłoczek rotacyjny

Tłoczek roatecyjny do wszystkich past crea.lign do łatwej i kontrolowanej aplikacji

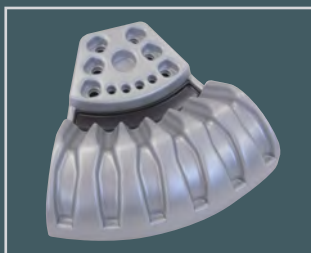
REF 32000444



Uchwyt

Uchwyt do wszystkich strzykawkę crea.lign 5g, do łatwej i kontrolowanej aplikacji.

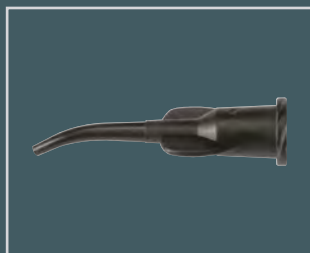
REF 320 0044 2



Stojak na strzykawki

Do przechowywania nawet dwunastu strzykawek crea.lign z uchwytami.

REF 320 0044 3

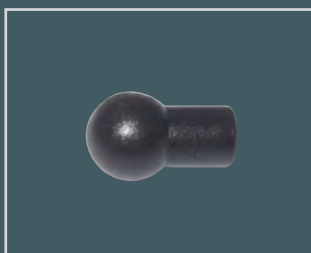


Kaniule aplikujące

Światłoodporne kaniule aplikujące dla wszystkich crea.lign 5g.

10 kaniuli aplikujących + 10 nakrętek ochronnych

REF 320 0094 0



Nakrętki

Światłoodporne nakrętki ochronne do wszystkich kaniuli aplikujących

50 sztuk

REF 320 0095 0

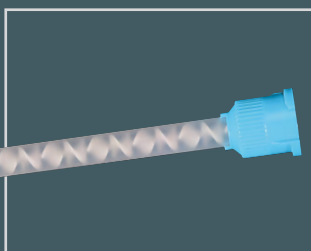


Kaniule mieszające combo.lign

Światłoodporne kaniule mieszające dla wszystkich combo.lign.

10 sztuk

REF COMKG210



Kaniule mieszające rozmiar 4

Kaniule mieszające do transparentnych silikonów visio.sil i visio.sil ILT.

12 sztuk

REF 320 0045 7



Kaniule mieszające rozmiar 1

Kaniule mieszające do visio.sil fix (wysokoprecyzyjnego silikonu do przedlewów).

12 sztuk

REF 320 0045 0



Podkładki do mieszania

100 mm x 100 mm
100 arkuszy
1 sztuka

REF 320 0046 0



Podkładki do mieszania

50 mm x 35 mm
100 arkuszy
10 sztuka

REF 330 0114 4



Uchwyt do pędzelka

Uchwyt do jednorazowych pędzelków

12 sztuk

REF 330 0114 9



Jednorazowe pędzelki

100 sztuk

REF 330 0114 2



Jednorazowe pojemniczki

małe pojemniczki do nakładania niewielkich ilości quantities primerów visio.lign primers (MKZ- Primer, K-Primer, MKZ EM- Aktivator and visio.link)

12 sztuk

REF 230 0013 0



visio.lign szafka na zęby

zawierające wkładki do szuflad pod novo.lign, neo.lign, crea.lign, combo.lign Opaquer oraz crea.lign Opaker.

REF VLIGNBOX1